

Test Report

Report No.: TLSZE00045033

Page 1 of 6



Applicant : CSP INC
Address : 8248 W.ORANGE DR GLENDALE, AZ 85303 USA

Report on the submitted sample(s) said to be:

Sample Name : SPACE SHUTTLE PEN
Item/Lot No. : 4-213
Buyer : Kids'Korner
Quantity of Sample : 2 pcs
Country of Origin : China
Exported to : USA
Client Specified Age Grading : 3+
Sample Received Date : Apr.18, 2012
Sample Resubmission Date : May 11, 2012/ May 17, 2012
Sample Tested Date : Apr.18, 2012 to May 18, 2012

Test Conducted:

As requested by the applicant, for details refer to next page(s)

Tested by 
Approved by 

Victor Wang
Lab Manager




Date 2012-05-21

No. 27484694

Test Report

Report No.: TLSZE00045033

Page 2 of 6

Executive Summary:

TEST REQUEST

- 1) US Consumer Product Safety Improvement Act of 2008 (CPSIA) with amendment (H.R.2715)
 - Lead in surface-coatings and similar materials of children's products
 - Lead in substrate materials of children's products
- 2) European Regulation(EC) No. 1907/2006, REACH & amendment No.552/2009 Annex XVII
 - Cadmium and its compounds

CONCLUSION

PASS

PASS

PASS^{#01}

***** For Further Details, Please Refer To the Following Page(s) *****



Test Report

Report No.: TLSZE00045033

Page 3 of 6

1) US CONSUMER PRODUCT SAFETY IMPROVEMENT ACT OF 2008 (CPSIA) WITH AMENDMENT (H.R.2715)

▼ Lead in surface-coating and similar materials of children's products

As specified in Consumer Product Safety Improvement Act of 2008 (CPSIA) and 16 CFR Ch.II part 1303 of Consumer Product Safety Commission of U.S.A, method CPSC-CH-E1003-09 was used and total lead content was determined by ICP-OES/AAS.

Tested Item	Result (ppm)			Limit (ppm)
	(1)	(2)	(3)	
Total Lead (Pb)	<5	<5	<5	90

Tested Component(s):

- (1) Silver coating
- (2) Metallic red coating
- (3) Metallic green coating

Remark:

- < = Less than
- ppm = parts per million = mg/kg

▼ Lead in substrate materials of children's products

As specified in Consumer Product Safety Improvement Act of 2008 (CPSIA), method(s) CPSC-CH-E1001-08.1/CPSC-CH-E1002-08.1 were used and total lead content was determined by ICP-OES/AAS.

Tested Item	Result (ppm)					Limit (ppm)
	(1)	(2)	(3)	(4)	(5)	
Total Lead (Pb)	<5	<5	<5	<5	<5	100

Tested Item	Result (ppm)					Limit (ppm)
	(6)	(7)	(8)	(9)	(10)	
Total Lead (Pb)	<5	<5	<5	36	<5	100

Test Report

Report No.: TLSZE00045033

Page 4 of 6

Tested Component(s):

- (1) White plastic(holder of buckle)
- (2) Beige plastic(cap on top and holder)
- (3) Black plastic(lining tube)
- (4) Beige yellow plastic (stopper of lining tube)
- (5) White plastic(core)
- (6) Blue ink(red pen)
- (7) Silver metal(washer ring)
- (8) Silver metal(spring in lining)
- (9) Silver metal(pen nib)
- (10) Silver metal(pen point)

Remark:

- \leq Less than
- ppm = parts per million = mg/kg
- Result(s) shown of tested component (9) is/are based on resubmitted part materials.

Test Report

Report No.: TLSZE00045033

Page 5 of 6

2) EUROPEAN REGULATION(EC) NO. 1907/2006, REACH & AMENDMENT NO.552/2009 ANNEX XVII

▼ Cadmium and its compounds

As specified in entry 23, annex XVII of European regulation (EC) No. 1907/2006 (REACH) with amendments No.552/2009 & No.494/2011, method BS EN 1122:2001 Method B was used and total Cadmium content was determined by ICP-OES/AAS.

Tested Item	Result (%)				Limit (%)
	(1)	(2)	(3)	(4)	
Cadmium (Cd)	<0.0005	<0.0005	<0.0005	<0.0005	0.01

Tested Component(s):

- (1) White plastic(holder of buckle)
- (2) Beige yellow plastic(cap on top and holder)
- (3) White plastic(core)
- (4) Blue ink(red pen)

Remark:

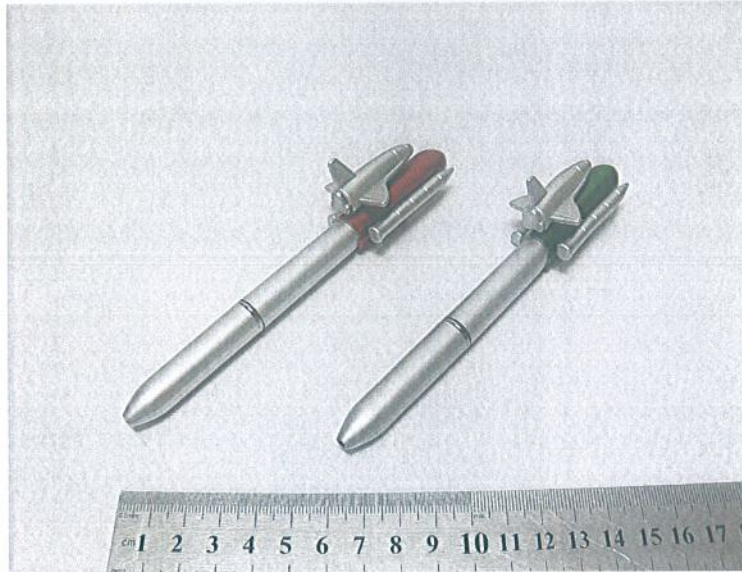
- < = Less than
- % = Percentage
- #01: CTI conducted Cadmium on the components which were identified by the client, and the testing results can meet European Regulation(EC) No. 1907/2006, REACH with amendments No.552/2009 & No.494/2011 Annex XVII requirement.

Test Report

Report No.: TLSZE00045033

Page 6 of 6

Photo of the sample



*** End of report ***

The test report is effective only with both signature and specialized stamp, The result(s) shown in this report refer only to the sample(s) tested. Without written approval of CTI, this report can't be reproduced except in full.