

# Test Report

Report No.: SZT10050507920

Page 1 of 5

**Applicant :** CSP INC  
**Address :** 8248 W. ORANGE DR GLENDALE, AZ 85303 USA

**Report on the submitted sample said to be:**

Sample Name : Double Candy Cane Heart / Bear Necklace  
Item No. : K10-910  
Buyer : Kids'Korner  
Country of Origin : China  
Exported to : U.S.A  
Labeled Age Grading : 3+  
Sample Received Date : May.05, 2010  
Resubmitted Sample Date : May.11, 2010  
Sample Tested Date : May.05, 2010 to May.19, 2010

**TEST REQUEST**

**CONCLUSION**

1)US Consumer Products Safety Improvement Act 2008 (CPSIA)

- Lead in surface-coatings and similar materials of children's product
- Lead in substrate materials of children's product

**PASS**

**PASS**

2)European Regulation(EC) No. 1907/2006, REACH & amendment No.552/2009 Annex XVII

- (Item 23)Cadmium and its compounds(Formerly Known as 91/338/EEC)

**PASS**

**Test Results:** Please refer to next page(s)

Inspected by:



Engineer

, Approved by:



Victor wang  
Lab Manager

Approved date:

2010-05-20



# Test Report

Report No.: SZT10050507920

Page 2 of 5

## 1) US CONSUMER PRODUCTS SAFETY IMPROVEMENT ACT 2008 (CPSIA)

### ▼ LEAD IN SURFACE-COATING AND SIMILAR MATERIALS OF CHILDREN'S PRODUCT

As Specified in Consumer Products Safety Improvement Act 2008 (CPSIA) and Title 16 Part 1303 Code of Federal Regulations, Chapter II – Consumer Products Safety Commission of U.S.A, Method CPSC-CH-E1003-09 was Used and Total Lead Content was Determined by Inductively Coupled Plasma Optical Emission Spectrometer (ICP-OES).

Element	Result (ppm)					Limit (ppm)
	(1)	(2)	(3)	(4)	(5)	
Total Lead (Pb)	<5	<5	<5	<5	<5	90

Tested Components:

- (1) Red coating(bear &heart pendant)
- (2) White coating(bear pendant)
- (3) Dk. green coating(bear pendant)
- (4) Black coating(bear pendant)
- (5) Silver electro-plated coating(pendant, tail of chain)

Remark:

- <= Less than
- ppm= parts per million based on dry weight of sample

### ▼ LEAD IN SUBSTRATE MATERIALS OF CHILDREN'S PRODUCT

As Specified in Consumer Products Safety Improvement Act 2008 (CPSIA), Methods CPSC-CH-E1001-08 and CPSC-CH-E1002-08 were Used and Total Lead Content was Determined by Inductively Coupled Plasma Optical Emission Spectrometer (ICP-OES).

Element	Result (ppm)										Limit (ppm)
	(1)	(2)	(3)	(4)	(5)	(6)	(7)	(8)	(9)	(10)	
Total Lead (Pb)	<5	176	130	<5	<5	<5	<5	<5	<5	<5	300

Tested Components:

- (1) Transparent plastic(rhinestone)
- (2) Silver electro-plated metal(bear pendant)
- (3) Silver electro-plated metal(heart pendant)
- (4) Silver electro-plated metal(body of lobster buckle)

# Test Report

Report No.: SZT10050507920

Page 3 of 5

- (5) Silver electro-plated metal(sliding spool of lobster buckle)
- (6) Silver electro-plated metal(small ring)
- (7) Silver electro-plated metal(chain)
- (8) Silver electro-plated metal(big chain ,tail of chain)
- (9) Silver electro-plated metal(joint ring of pendant)
- (10) White plastic(pendant , tail of chain)

Remark:

- ppm= parts per million based on dry weight of sample

## 2)CADMIUM AND ITS COMPOUNDS

As Specified in European Regulation(EC) No. 1907/2006, REACH & amendment No.552/2009 Annex XVII, with Reference to EN1122:2001 Method B or other Appropriate Methods, and Total Cadmium Content was Performed by Inductively Coupled Plasma Optical Emission Spectrometer (ICP-OES).

Element	Result (%)						Limit (%)
	(1)	(2)	(3)	(4)	(5)	(6)	
Cadmium (Cd)	<0.0001	<0.0001	<0.0001	<0.0001	<0.0001	<0.0001	N.D(<0.0001)

Element	Result (%)			Limit (%)
	(7)	(8)	(9)	
Cadmium (Cd)	<0.0001	<0.0001	<0.0001	N.D(<0.0001)

Element	Result (%)							Limit (%)
	(10)	(11)	(12)	(13)	(14)	(15)	(16)	
Cadmium (Cd)	<0.0005	<0.0005	<0.0005	<0.0005	<0.0005	<0.0005	<0.0005	0.01

Tested Components:

- (1) Silver electro-plated metal(spring of lobster buckle)
- (2) Silver electro-plated metal(joint ring of pendant)
- (3) Silver electro-plated metal(bear pendant)
- (4) Silver electro-plated metal(heart pendant)
- (5) Silver electro-plated metal(body of lobster buckle)
- (6) Silver electro-plated metal(sliding spool of lobster buckle)
- (7) Silver electro-plated metal(small ring)

Building C, Hongwei Industrial Zone, Baoan 70 District, Shenzhen

# Test Report

Report No.: SZT10050507920

Page 4 of 5

- (8) Silver electro-plated metal(chain)
- (9) Silver electro-plated metal(big chain ,tail of chain)
- (10) Silver electro-plated coating(pendant, tail of chain)
- (11) Transparent plastic(rhinestone)
- (12) Red coating(bear &heart pendant)
- (13) White coating(bear pendant)
- (14) Green coating(bear pendant)
- (15) Black coating(bear pendant)
- (16) White plastic(pendant , tail of chain)

Remark:

- $\leq$  Less than
- %= Percentage based on dry weight of testing sample
- N.D=Not Detected.

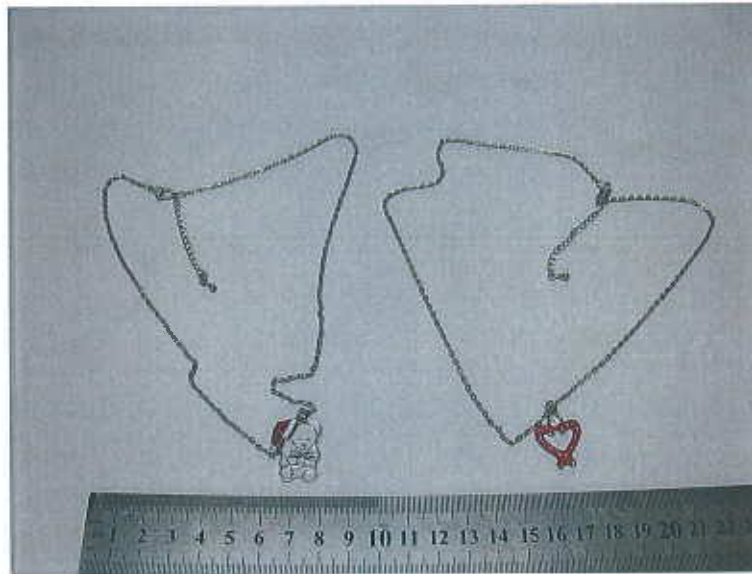


## Test Report

Report No.: SZT10050507920

Page 5 of 5

### Photo of the sample



\*\*\* End of report \*\*\*

This report is considered invalidated without the Special Seal for Inspection of the CTI, This report shall not be altered, increased or deleted. The results shown in this test report refer only to the sample(s) tested. Without written approval of CTI, this test report shall not be copied except in full and published as advertisement.