

Test Report

Report No.: SZT10062412547A

Page 1 of 5

Applicant : CSP INC
Address : 8248 W. ORANGE DR GLENDALE, AZ 85303 USA

Report on the submitted sample said to be:

Sample Name : LEATHER BRACELETS - ASST
Item No. : K06-012
Buyer : Kids'Korner
Country of Origin : China
Exported to : U.S.A
Client Specified Age Grading : 3+
Sample Received Date : Jun.24, 2010
Further Information Date : Jun.28, 2010
Resubmitted Sample Date : Jun.29, 2010
Sample Tested Date : Jun.24, 2010 to Jul.01, 2010

TEST REQUEST

CONCLUSION

- 1)European Regulation(EC) No. 1907/2006, REACH & amendment No.552/2009 Annex XVII
- (Item 23)Cadmium and its compounds(Formerly Known as 91/338/EEC) **PASS**
- 2)US Consumer Products Safety Improvement Act 2008 (CPSIA)
- Lead in surface-coatings and similar materials of children's product **PASS**
- Lead in substrate materials of children's product **PASS**

Test Results: Please refer to next page(s)

Inspected by: Angela, Approved by: Victor wang, Approved date: 2010-07-02
Engineer Victor wang
Lab Manager



Test Report

Report No.: SZT10062412547A

Page 2 of 5

1) CADMIUM AND ITS COMPOUNDS

As Specified in European Regulation(EC) No. 1907/2006, REACH & amendment No.552/2009 Annex XVII, with Reference to EN1122:2001 Method B or other Appropriate Methods, and Total Cadmium Content was Performed by Inductively Coupled Plasma Optical Emission Spectrometer (ICP-OES).

Element	Result (%)					Limit (%)
	(1)	(2)	(3)	(4)	(5)	
Cadmium (Cd)	<0.0001	<0.0001	<0.0001	<0.0001	<0.0001	N.D(<0.0001)

Element	Result (%)					Limit (%)
	(6)	(7)	(8)	(9)	(10)	
Cadmium (Cd)	<0.0001	<0.0001	<0.0001	<0.0001	<0.0001	N.D(<0.0001)

Element	Result (%)				Limit (%)
	(11)	(12)	(13)	(14)	
Cadmium (Cd)	<0.0005	<0.0005	<0.0005	<0.0005	0.01

Tested Components:

- (1) Silver electro-plated metal(round ornaments)
- (2) Silver electro-plated metal(tetrahedron ornaments)
- (3) Silver electro-plated metal(male button)
- (4) Silver electro-plated metal(back of male button)
- (5) Silver electro-plated metal(face of female button)
- (6) Silver electro-plated metal(back of female button)
- (7) Silver electro-plated metal(wire, back of female button)
- (8) Silver electro-plated metal(long ornaments)
- (9) Silver electro-plated metal(cone ornaments)
- (10) Silver electro-plated metal(skull ornament)
- (11) Red coating with white coating
- (12) Black paint(skull ornament)
- (13) Black synthetic leather(face of bracelet)
- (14) Dull black synthetic leather(lining of bracelet)

Remark:

- <= Less than
- %= Percentage based on dry weight of testing sample
- N.D=Not Detected.
- Result(s) shown of tested component (13) and (14) is/are quoted from CTI test report SZT10052409695.

Building C, Hongwei Industrial Zone, Baoan 70 District, Shenzhen

Test Report

Report No.: SZT10062412547A

Page 3 of 5

2) US CONSUMER PRODUCTS SAFETY IMPROVEMENT ACT 2008 (CPSIA)

▼ LEAD IN SURFACE-COATING AND SIMILAR MATERIALS OF CHILDREN'S PRODUCT

As Specified in Consumer Products Safety Improvement Act 2008 (CPSIA) and Title 16 Part 1303 Code of Federal Regulations, Chapter II – Consumer Products Safety Commission of U.S.A, Method CPSC-CH-E1003-09 was Used and Total Lead Content was Determined by Inductively Coupled Plasma Optical Emission Spectrometer (ICP-OES).

Element	Result (ppm)		Limit (ppm)
	(1)	(2)	
Total Lead (Pb)	<5	<5	90

Tested Components:

- (1) Red coating with white coating
- (2) Black paint(skull ornament)

Remark:

- <= Less than
- ppm= parts per million based on dry weight of sample

▼ LEAD IN SUBSTRATE MATERIALS OF CHILDREN'S PRODUCT

As Specified in Consumer Products Safety Improvement Act 2008 (CPSIA), Methods CPSC-CH-E1001-08 and CPSC-CH-E1002-08 were Used and Total Lead Content was Determined by Inductively Coupled Plasma Optical Emission Spectrometer (ICP-OES).

Element	Result (ppm)						Limit (ppm)
	(1)	(2)	(3)	(4)	(5)	(6)	
Total Lead (Pb)	12	<5	<5	<5	<5	<5	300

Element	Result (ppm)						Limit (ppm)
	(7)	(8)	(9)	(10)	(11)	(12)	
Total Lead (Pb)	<5	24	<5	<5	14	85	300

Test Report

Report No.: SZT10062412547A

Page 4 of 5

Tested Components:

- (1) Silver electro-plated metal(male button)
- (2) Silver electro-plated metal(back of male button)
- (3) Silver electro-plated metal(face of female button)
- (4) Silver electro-plated metal(back of female button)
- (5) Silver electro-plated metal(wire, back of female button)
- (6) Silver electro-plated metal(long ornaments)
- (7) Silver electro-plated metal(cone ornaments)
- (8) Silver electro-plated metal(skull ornament)
- (9) Silver electro-plated metal(round ornaments)
- (10) Silver electro-plated metal(tetrahedron ornaments)
- (11) Black synthetic leather(face of bracelet)
- (12) Dull black synthetic leather(lining of bracelet)

Remark:

- \leq Less than
- ppm= parts per million based on dry weight of sample
- Result(s) shown of tested component (11) and (12) is/are quoted from CTI test report SZT10052409695.

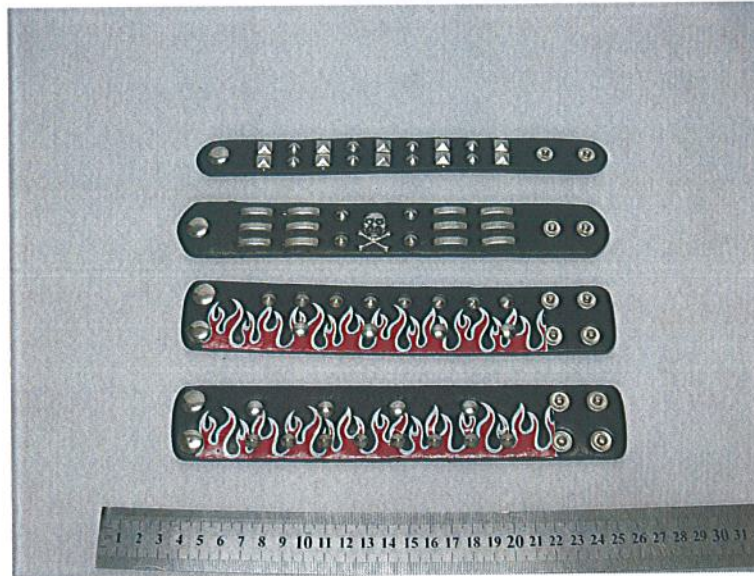


Test Report

Report No.: SZT10062412547A

Page 5 of 5

Photo of the sample



*** End of report ***

This report is considered invalidated without the Special Seal for Inspection of the CTI, This report shall not be altered, increased or deleted. The results shown in this test report refer only to the sample(s) tested. Without written approval of CTI, this test report shall not be copied except in full and published as advertisement.