



Test Report No.

EFSN13050027C

Test Report

Applicant	: CSP INC
Address	: 8248 W. ORANGE DR GLENDALE, AZ 85303 USA
Buyer	: KIDS' KORNER
Country of Origin	: N/A
Test Item	: 1 sample of slime
Sample Description	: MULTI-COLOR SLIME
Style/Model No.	: K2-308
Delivery Condition	: Apparent good, samples tested as received
Date of Receipt:	: May 03 rd 2013
Test Period	: May 04 th 2013 to May 09 th 2013
Testing Location	: Shenzhen
Test Specification	Physical and Mechanical Test Flammability Test Total Lead Content and Migration of Certain Elements Test In accordance with ASTM F963-11 : Standard Consumer Safety Specification for Toy Safety Total Lead Content – according to US Consumer Product Safety Improvement Act 2008 (CPSIA). Phthalates - according to US Consumer Product Safety Improvement Act 2008 (CPSIA).
Test Result	: PASS
Checked by:	
May 10 th 2013	 Tim Huang Toys Testing Manager
May 10 th 2013	 Lydia Wang Chemical Lab Manager
Other Information / Remark:	
Labeled Age Grade: For 5 & up.	
Requested Age Grade: 3+.	
Tested Age Grade: Over 3 years.	
This test report is valid for the tested samples only. Without permission of the test center this test report is not permitted to be duplicated in extracts. This test report does not entitle to carry any safety mark on this or similar products.	



Eurofins Testing Technology (Shenzhen) Co. Ltd.

3A, F1.6, Tianfa Building, Tian'an Cyber Park, Futian District, Shenzhen City, Guangdong, P. R. China
 Tel.: +86 755 8358 5700 Fax: +86 755 8358 5701 Website: www.eurofins.com / www.pt.eurofins.com

Test Report No.

EFSN13050027C

1. ASTM F963-11, Standard Consumer Safety Specification for Toy Safety

Section	Requirement	Result
4	Safety Requirements	
4.1	Material Quality	P
4.2	Flammability	P
4.3	Toxicology	
4.3.1	Hazardous Substances	N/A
4.3.2	Manufacturing and Packaging of Food	N/A
4.3.3	Indirect Food Additives	N/A
4.3.4	Cosmetics	N/A
4.3.5	Total Lead Content and Migration of Certain Elements (Please refer to details on page 6.)	P
4.3.6	Cosmetics, Liquids, Pastes, Putties, Gels, and Powders	N/A
4.3.7	Stuffing Materials(Visual Inspection)	N/A
4.3.8	DEHP(DOP)	N/A
4.4	Electrical/Thermal Energy	N/A
4.5	Sound-Producing Toys	N/A
4.6	Small Objects	N/A
4.7	Accessible Edges	P
4.8	Projections	N/A
4.9	Accessible Points	P
4.10	Wires or Rods	N/A
4.11	Nails and Fasteners	N/A
4.12	Plastic Film	N/A
4.13	Folding Mechanisms and Hings	
4.13.1	Folding Mechanisms	N/A
4.13.2	Hing-Line Clearance	N/A
4.14	Cords, Straps, and Elastics	
4.14.1	Cords, Straps, and Elastics in Toys	N/A
4.14.2	Self Retracting Pull Cords	N/A

Test Report No.

EFSN13050027C

Section	Requirement	Result
4.14.3	Pull Toys	N/A
4.14.4	Strings and Lines for Flying Devices	N/A
4.14.5	Cords on Toy Bags Intended for Children Up to 18 Months	N/A
4.15	Stability and Over-Load Requirements	
4.15.1	Stability of Ride-On Toys and Toy Seats	N/A
4.15.2	Sideways Stability Requirements	N/A
4.15.3	Fore and Aft Stability	N/A
4.15.4	Stability of Stationary Floor Toys	N/A
4.15.5	Overload Requirements for Ride-On Toys and Toy Seats	N/A
4.15.6	Wheeled Ride-On Toys	N/A
4.16	Confined Spaces	
4.16.1	Ventilation	N/A
4.16.2	Closures	N/A
4.16.3	Toys that Enclose the Head	N/A
4.17	Wheels, Tires, and Axles	N/A
4.18	Holes, Clearance, and Accessibility of Mechanisms	
4.18.1	Accessible Clearances for Moveable Segments	N/A
4.18.2	Circular Holes in Rigid Materials	N/A
4.18.3	Chains and Belts	N/A
4.18.4	Inaccessibility of Mechanisms	N/A
4.18.5	Winding Keys	N/A
4.18.6	Coil Springs	N/A
4.19	Simulated Protective Devices(such as helmets, hats, and goggles)	N/A
4.20	Pacifiers	N/A
4.20.1	Pacifiers Nitrosamine Content	N/A
4.21	Projectile Toys	N/A
4.22	Teethers and Teething Toys	N/A
4.23	Rattles	N/A
4.24	Squeeze Toys	N/A

Test Report No.
EFSN13050027C

Section	Requirement	Result
4.25	Battery-Operated Toys	N/A
4.25.10	Battery-Powered Ride-On Toys	N/A
4.26	Toys Intended to be Attached to a Crib or Playpen	N/A
4.27	Stuffed and Beanbag-Type Toys	N/A
4.28	Stroller and Carriage Toys	N/A
4.29	Art Materials	N/A
4.29.1	Art Materials Toxic	N/A
4.30	Toy Gun Marking	N/A
4.31	Balloons	N/A
4.32	Certain Toys with Spherical Ends	N/A
4.33	Marbles	N/A
4.34	Balls	N/A
4.35	Pompoms	N/A
4.36	Hemispheric-Shaped Objects	N/A
4.37	Yo Yo Elastic Tether Toys	N/A
4.38	Magnets	N/A
4.39	Jaw Entrapment in Handles and Steering Wheels	N/A
5	Labeling Requirements	
5.1	Federal Government Requirements	N/A
5.2	Age Grading Labeling	N/A
5.3	Safety Labeling Requirements	N/A
5.4	Aquatic Toys	N/A
5.5	Crib and Playpen Toys	N/A
5.6	Mobiles	N/A
5.7	Stroller and Carriage Toys	N/A
5.8	Toys Intended to be Assembled By and Adult	N/A
5.9	Simulated Protective Devices	N/A
5.10	Toys with Functional Sharp Edges or Points	N/A
5.11	Small Objects, Small Balls, Marbles, and Balloons	N/A

Test Report No.

EFSN13050027C

Section	Requirement	Result
5.12	Toy Caps	N/A
5.13	Art Materials	N/A
5.14	Electric Toys	N/A
5.15	Battery-Operated Toys	N/A
5.16	Promotional Materials	P
5.17	Magnets	N/A
6	Instructional Literature	
6.1	Definition and Description	P
6.2	Crib and Playpen Toys	N/A
6.3	Mobiles	N/A
6.4	Toys Intended to be Assembled By a Adult	N/A
6.5	Battery-Operated Toys	N/A
6.6	Toys in Contact with Food	N/A
7	Producer's Markings	
7.1	Producer's Markings	P
7.2	Battery-Powered Ride-on Toys	N/A
8	Test methods	
8.5	Normal Use Testing	P
8.7.1	Drop Test	P
8.7.2	Tipover Test for Large, Bulky Toys	N/A
8.7.3	Tumble Test for Wheeled Toys	N/A
8.7.4	Impact Test for Toys that Cover the Face	N/A
8.8	Torque Tests for Removal of Components	P
8.9	Tension Test for Removed of Components	P
8.9.1	Tension Test for Seams in Stuffed Toys and Beanbag Type Toys	N/A
8.10	Compression Test	N/A
8.11	Tests for Tire Removal and Snap-in Wheel and Axle Assembly Removal	N/A
8.12	Flexure Test	N/A
8.13	Test for Mouth-Actuated Toys	N/A

Note: P = Pass F = Fail N/A = Not Applicable

Test Report No.

EFSN13050027C

2. Material list (*)

Testing material No.	Component	Material	Colour
1	Multi-color slime	Slime	Multi-color

Remark:

* According to the customer's requirement, the appointed material has been tested.

3. ASTM F963-11 4.3.5.2(2)(b), Migration of Certain Elements in Accessible Component Parts

As per ASTM F963-11, soluble toxic element contents are determined by Inductively Coupled Plasma Optical Emission Spectrometry (ICP-OES).

Detection limit : 2.5mg/kg for each of the 8 soluble toxic elements

Test No.	Material No.	Testing element								
		As	Ba	Cd	Cr	Hg	Pb	Sb	Se	
		Limit (mg/kg)								
		25	1000	75	60	60	90	60	500	
Test result (mg/kg)										
Heavy Metals-1	1	<2.5	<2.5	<2.5	<2.5	<2.5	<2.5	<2.5	<2.5	<2.5

4. ASTM F963-11 4.3.5.2(2)(a), Total Lead Content in Accessible Component Parts

Test method : CPSC-CH-E1003-09.1
The sample was digested with acid. Then the lead content was determined by Inductively Coupled Plasma Optical Emission Spectrometry (ICP-OES).

Limit : 90 ppm – according to ASTM F963-11 Standard Consumer Safety Specification for Toy Safety

Detection Limit : 10 ppm

Test No.	Material No.	Test result (ppm)
Pb-1	1	<10

Note: - < = less than
- ppm = mg/kg

Test Report No. EFSN13050027C

5. Total Lead Content (CPSIA)

Test method : CPSC-CH-E1003-09.1
 The sample was digested with acid. Then the lead content was determined by Inductively Coupled Plasma Optical Emission Spectrometry (ICP-OES).
 Limit : See Note 2.
 Detection limit : 10 ppm

Test No.	Material No.	Test result (ppm)
Pb-1	1	<10

Note: 1. - < = less than
 - ppm = mg/kg

2. Total lead content according to US Consumer Product Safety Improvement Act 2008 (CPSIA Sec.101):
- a) For paint and similar surface coating materials in children's products, the limit for Lead has been changed to 90 ppm from August 14th 2009.
 - b) For materials other than paints and similar surface coating in children's products, the limit for Lead has been changed to 100 ppm from August 14th 2011.

6. Phthalates

Test method : CPSIA Sec.108, CPSC-CH-C1001-09.3
 Requirement : According to US Consumer Product Safety Improvement Act 2008 (CPSIA).

A: For toys and childcare articles

Test No.			Phthalates-1	Limit	Detection limit
Material No.			1		
Parameter	CAS No.	Unit	Test result		
Dibutylphthalate (DBP)	84-74-2	%	n.d.	0.1	0.005
Benzylbutylphthalate (BBP)	85-68-7	%	n.d.	0.1	0.005
Diethylhexylphthalate (DEHP)	117-81-7	%	n.d.	0.1	0.005

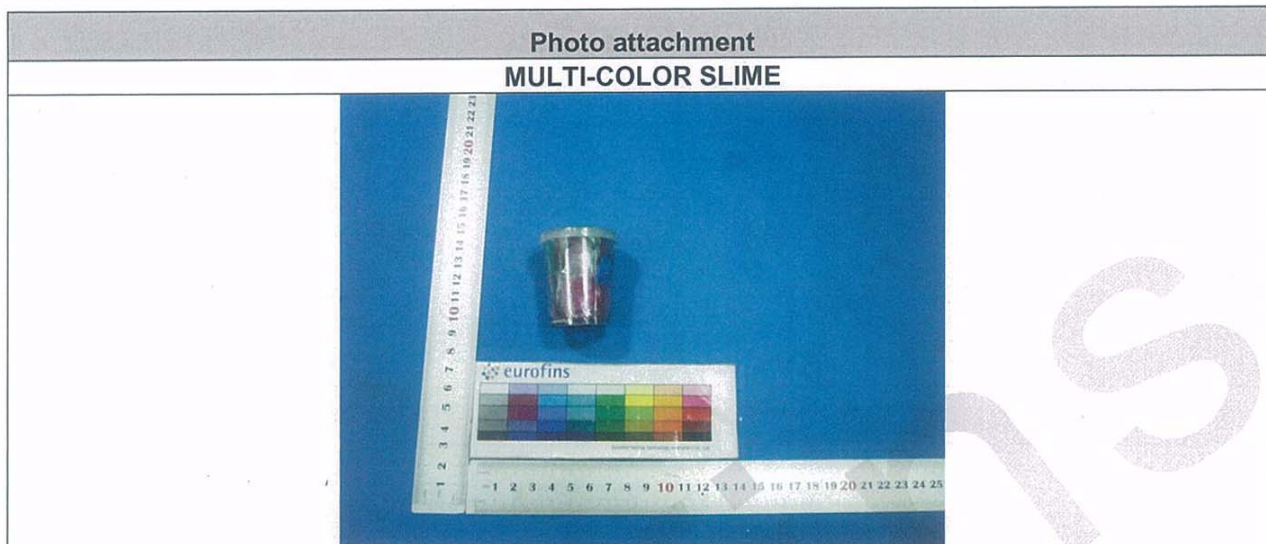
B: Additional requirements for toys and childcare articles, which can be placed in the mouth by children

Test No.			Phthalates-1	Limit	Detection limit
Material No.			1		
Parameter	CAS No.	Unit	Test result		
Di-n-octylphthalate (DNOP)	117-84-0	%	n.d.	0.1	0.005
Diisodecylphthalate (DIDP)	26761-40-0	%	n.d.	0.1	0.005
Diisononylphthalate (DINP)	28553-12-0	%	n.d.	0.1	0.005

Note: - n.d. = not detected

Test Report No.

EFSN13050027C



--- END ---