

Test Report

Report No.: TLSZE00045029

Page 1 of 5

Applicant : CSP INC

Address : 8248 W. ORANGE DR GLENDALE, AZ 85303 USA

Report on the submitted sample(s) said to be:

Sample Name : EMERGENCY WHISTLE WITH CORD
Item/Lot No. : 16-205
Buyer : Kids'Korner
Quantity of Sample : 3 pcs
Country of Origin : China
Exported to : USA
Client Specified Age Grading : 3+
Sample Received Date : Apr.18, 2012
Sample Tested Date : Apr.18, 2012 to May 08, 2012

Test Conducted:

As requested by the applicant, for details refer to next page(s)

Tested by _____

Approved by _____

Victor Wang
Lab Manager



Reviewed by _____

Date _____

2012-05-17

No. 27482113



Test Report

Report No.: TLSZE00045029

Page 2 of 5

Executive Summary:

TEST REQUEST

- 1) US Consumer Product Safety Improvement Act of 2008 (CPSIA) with amendment (H.R.2715)
 - Lead in surface-coatings and similar materials of children's products
 - Lead in substrate materials of children's products
- 2) European Regulation(EC) No. 1907/2006, REACH & amendment No.552/2009 Annex XVII
 - Cadmium and its compounds

CONCLUSION

N/A

PASS^{#01}

PASS^{#02}

N/A = Not Applicable

***** For Further Details, Please Refer To the Following Page(s) *****



Test Report

Report No.: TLSZE00045029

Page 3 of 5

1) US CONSUMER PRODUCT SAFETY IMPROVEMENT ACT OF 2008 (CPSIA) WITH AMENDMENT (H.R.2715)

▼ Lead in surface-coating and similar materials of children's products.....N/A

As specified in Consumer Product Safety Improvement Act of 2008 (CPSIA) and 16 CFR Ch.II part 1303 of Consumer Product Safety Commission of U.S.A, method CPSC-CH-E1003-09 was used and total lead content was determined by ICP-OES/AAS.

N/A = Not Applicable (as received, there was no paint or similar surface-coating material on the submitted sample(s), so it is not applicable to the requirement of this standard)

▼ Lead in substrate materials of children's products

As specified in Consumer Product Safety Improvement Act of 2008 (CPSIA), method(s) CPSC-CH-E1001-08.1/CPSC-CH-E1002-08.1 were used and total lead content was determined by ICP-OES/AAS.

Tested Item	Result (ppm)							Limit (ppm)
	(1)	(2)	(3)	(4)	(5)	(6)	(7)	
Total Lead (Pb)	<5	<5	<5	<5	<5	<5	<5	100

Tested Component(s):

- (1) Dark blue plastic
- (2) Silver metal
- (3) Dark blue cord
- (4) Green plastic
- (5) Red plastic
- (6) Green cord
- (7) Red cord

Remark:

- < = Less than
- ppm = parts per million = mg/kg
- #01: CTI conducted total lead on the components which were identified by the client, and the testing results can meet CPSIA requirement.

Test Report

Report No.: TLSZE00045029

Page 4 of 5

2) EUROPEAN REGULATION(EC) NO. 1907/2006, REACH & AMENDMENT NO.552/2009

ANNEX XVII

▼ Cadmium and its compounds

As specified in entry 23, annex XVII of European regulation (EC) No. 1907/2006 (REACH) with amendments No.552/2009 & No.494/2011, method BS EN 1122:2001 Method B was used and total Cadmium content was determined by ICP-OES/AAS.

Tested Item	Result (%)							Limit (%)
	(1)	(2)	(3)	(4)	(5)	(6)	(7)	
Cadmium (Cd)	<0.0005	<0.0005	<0.0005	<0.0005	<0.0005	<0.0005	<0.0005	0.01

Tested Component(s):

- (1) Dark blue plastic
- (2) Silver metal
- (3) Dark blue cord
- (4) Green plastic
- (5) Red plastic
- (6) Green cord
- (7) Red cord

Remark:

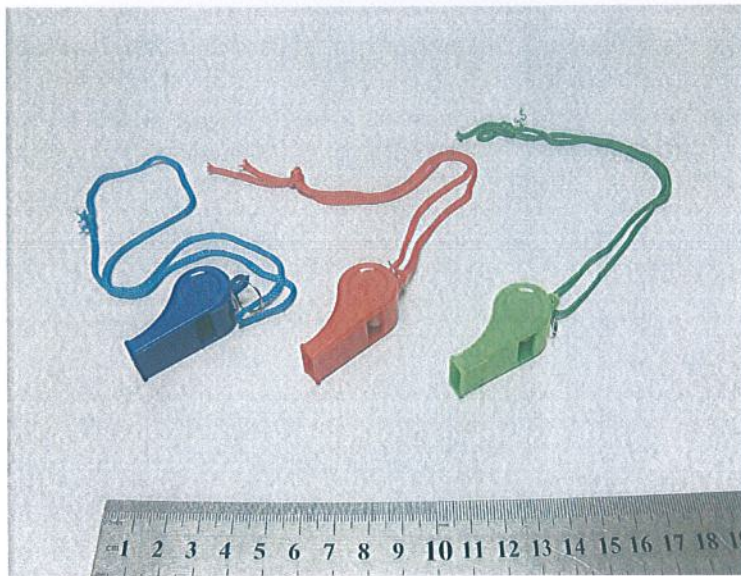
- < = Less than
- % = Percentage
- ^{#02}: CTI conducted Cadmium on the components which were identified by the client, and the testing results can meet European Regulation(EC) No. 1907/2006, REACH with amendments No.552/2009 & No.494/2011 Annex XVII requirement.

Test Report

Report No.: TLSZE00045029

Page 5 of 5

Photo of the sample



*** End of report ***

The test report is effective only with both signature and specialized stamp, The result(s) shown in this report refer only to the sample(s) tested. Without written approval of CTI, this report can't be reproduced except in full.