

Test Report

Report No.: TLSZE00045037

Page 1 of 6

Applicant : CSP INC

Address : 8248 W. ORANGE DR GLENDALE, AZ 85303 USA

Report on the submitted sample(s) said to be:

Sample Name : GLOW NECKLACE
Item/Lot No. : K1-203
Buyer : Kids'Korner
Quantity of Sample : 1 pc
Country of Origin : China
Exported to : USA
Client Specified Age Grading : 3+
Sample Received Date : Apr.18, 2012
Further Information Date : Apr.25, 2012
Sample Tested Date : Apr.18, 2012 to Apr.27, 2012

Test Conducted:

As requested by the applicant, for details refer to next page(s)

Tested by *Becky Zhou*

Approved by *Victor Wang*

Victor Wang
Lab Manager



Reviewed by *Josker Zheng*

Date 2012-04-27

No. 27485241

Centre Testing International (Shenzhen) Co., Ltd. Hongwei Industrial Zone, Bao'an 70 District, Shenzhen, Guangdong, China

Test Report

Report No.: TLSZE00045037

Page 2 of 6

Executive Summary:

TEST REQUEST

- 1) US Consumer Product Safety Improvement Act of 2008 (CPSIA) with amendment (H.R.2715)
 - Lead in surface-coatings and similar materials of children's products
 - Lead in substrate materials of children's products
 - Phthalates in children's toys and child care articles
- 2) European Regulation(EC) No. 1907/2006, REACH & amendment No.552/2009 Annex XVII
 - Cadmium and its compounds

CONCLUSION

N/A
PASS
PASS
PASS

N/A = Not Applicable

***** For Further Details, Please Refer To the Following Page(s) *****

Test Report

Report No.: TLSZE00045037

Page 3 of 6

1) US CONSUMER PRODUCT SAFETY IMPROVEMENT ACT OF 2008 (CPSIA) WITH AMENDMENT (H.R.2715)

▼ Lead in surface-coating and similar materials of children’s products.....N/A

As specified in Consumer Product Safety Improvement Act of 2008 (CPSIA) and 16 CFR Ch.II part 1303 of Consumer Product Safety Commission of U.S.A, method CPSC-CH-E1003-09 was used and total lead content was determined by ICP-OES/AAS.

N/A = Not Applicable (as received, there was no paint or similar surface-coating material on the submitted sample(s), so it is not applicable to the requirement of this standard)

▼ Lead in substrate materials of children’s products

As specified in Consumer Product Safety Improvement Act of 2008 (CPSIA), method(s) CPSC-CH-E1001-08.1/CPSC-CH-E1002-08.1 were used and total lead content was determined by ICP-OES/AAS.

Tested Item	Result (ppm)			Limit (ppm)
	(1)	(2)	(3)	
Total Lead (Pb)	<5	<5	<5	100

Tested Component(s):

- (1) Yellow silicone rubber
- (2) Blue silicone rubber
- (3) Pink silicone rubber

Remark:

- < = Less than
- ppm = parts per million = mg/kg

Test Report

Report No.: TLSZE00045037

Page 4 of 6

▼ Phthalates in children's toys and child care articles

As specified in Consumer Product Safety Improvement Act of 2008 (CPSIA), method CPSC-CH-C1001-09.3 was used and phthalates were determined by gas chromatograph with mass spectrometry (GC-MS).

Tested Item	Result (%)		Limit [#] (%)
	(1)	(2)/(3)	
Di-2-ethylhexyl Phthalate (DEHP)	<0.003	<0.003	0.1
Dibutyl Phthalate (DBP)	<0.003	<0.003	0.1
Benzylbutyl Phthalate (BBP)	<0.003	<0.003	0.1

Tested Item	Result (%)		Limit [#] (%)
	(1)	(2)/(3)	
Diisononyl Phthalate (DINP)	<0.005	<0.005	0.1
Di-n-octyl Phthalate (DNOP)	<0.003	<0.003	0.1
Diisodecyl Phthalate (DIDP)	<0.005	<0.005	0.1

Tested Component(s):

- (1) Yellow silicone rubber
- (2) Blue silicone rubber
- (3) Pink silicone rubber

Remark:

- < = Less than
- % = Percentage
- # = The limit for the test result is 1/n of the value column (where " n" is the number of mixed samples)

Test Report

Report No.: TLSZE00045037

Page 5 of 6

2) EUROPEAN REGULATION(EC) NO. 1907/2006, REACH & AMENDMENT NO.552/2009

ANNEX XVII

▼ Cadmium and its compounds

As specified in entry 23, annex XVII of European regulation (EC) No. 1907/2006 (REACH) with amendments No.552/2009 & No.494/2011, method BS EN 1122:2001 Method B was used and total Cadmium content was determined by ICP-OES/AAS.

Tested Item	Result (%)			Limit (%)
	(1)	(2)	(3)	
Cadmium (Cd)	<0.0005	<0.0005	<0.0005	0.01

Tested Component(s):

- (1) Yellow silicone rubber
- (2) Blue silicone rubber
- (3) Pink silicone rubber

Remark:

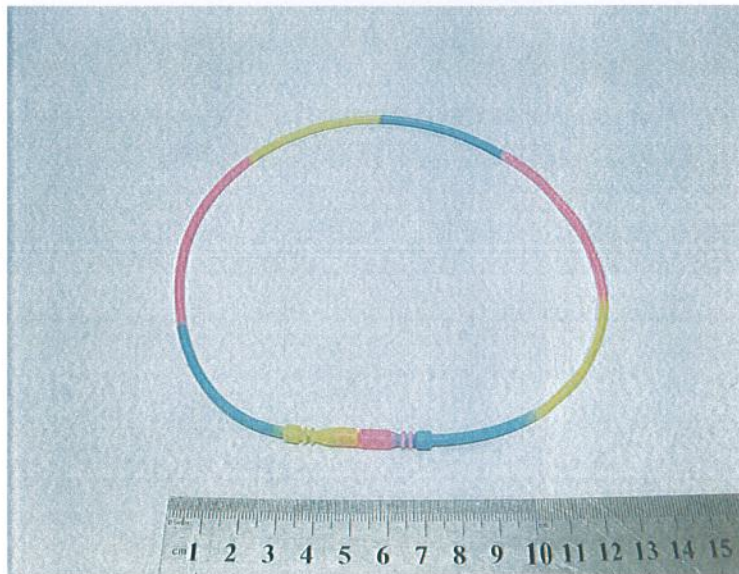
- < = Less than
- % = Percentage

Test Report

Report No.: TLSZE00045037

Page 6 of 6

Photo of the sample



*** End of report ***

The test report is effective only with both signature and specialized stamp, The result(s) shown in this report refer only to the sample(s) tested. Without written approval of CTI, this report can't be reproduced except in full.