

Test Report

Report No.: SZT10051208690A

Page 1 of 7

Applicant : CSP INC
Address : 8248 W. ORANGE DR GLENDALE, AZ 85303 USA

Report on the submitted sample said to be:



Sample Name : Patch the Bear
Item/Lot No. : 12-001
Buyer : Kids'Korner
Country of Origin : China
Exported to : U.S.A
Client Specified Age Grading : 3+
Labelled Age Grading : Not stated
Age Group Applied in Testing : All ages
Sample Received Date : May.12,2010
Resubmitted Sample Date : May.28,2010
Sample Tested Date : May.12,2010 to May.28,2010

TEST REQUEST

CONCLUSION

- | | |
|--|-------------|
| 1) European Regulation(EC) No. 1907/2006, REACH & amendment No.552/2009 Annex XVII
- (Item 23)Cadmium and its compounds(Formerly Known as 91/338/EEC) | PASS |
| 2) ASTM F963-08 Standard Consumer Safety Specification for Toy Safety | PASS |
| 3) US Consumer Products Safety Improvement Act 2008 (CPSIA)
- Lead in surface-coatings and similar materials of children's product | PASS |
| - Lead in substrate materials of children's product | PASS |
| - Phthalates in children's toys and child care articles | PASS |

Test Results: Please refer to next page(s)

Inspected by:  , Approved by:  , Approved date: 2010-06-01
Engineer Victor wang
Lab Manager



Building C, Hongwei Industrial Zone, Baoan 70 District, Shenzhen



Test Report

Report No.: SZT10051208690A

Page 2 of 7

1) CADMIUM AND ITS COMPOUNDS

As Specified in European Regulation(EC) No. 1907/2006, REACH & amendment No.552/2009 Annex XVII, with Reference to EN1122:2001 Method B or other Appropriate Methods, and Total Cadmium Content was Performed by Inductively Coupled Plasma Optical Emission Spectrometer (ICP-OES).

Element	Result (%)						Limit (%)
	(1)	(2)	(3)	(4)	(5)	(6)	
Cadmium(Cd)	<0.0005	<0.0005	<0.0005	<0.0005	<0.0005	<0.0005	0.01

Element	Result (%)						Limit (%)
	(7)	(8)	(9)	(10)	(11)	(12)	
Cadmium(Cd)	<0.0005	<0.0005	<0.0005	<0.0005	<0.0005	<0.0005	0.01

Tested Components:

- (1) Brown flocking(nose)
- (2) Transparent plastic(eyes)
- (3) Black soft plastic (eye pad)
- (4) Black hard plastic(inside of eyes)
- (5) Flesh long plush(body)
- (6) Black plastic(nose)
- (7) Brown long plush(eye&ears)
- (8) Dk. brown short plush(scarf&sole)
- (9) Flesh short plush(face&ears)
- (10) White wadding(inside)
- (11) White thread(neck)
- (12) Dk. brown thread(mouth)

Remark:

- <= Less than
- %= Percentage based on dry weight of testing sample

Building C, Hongwei Industrial Zone, Baoan 70 District, Shenzhen

Test Report

Report No.: SZT10051208690A

Page 3 of 7

2) ASTM F963 -08

AS SPECIFIED IN ASTM F963-08 STANDARD CONSUMER SAFETY SPECIFICATION FOR TOY SAFETY.

<u>Clause</u>	<u>Description</u>	<u>Assessment</u>
4.	Safety Requirements	
4.1	Material Quality (Visual Examination).....	Pass
4.2	Flammability Test.....	Pass (See Note 1)
4.3	Toxicology	
4.3.5	Paint & Similar Surface-coating Material.....	Pass (See Note 2)
4.6	Small Objects.....	Pass
4.7	Accessible Edges.....	Pass
4.9	Accessible Points.....	Pass
4.14	Cords and Elastic.....	Pass
4.27	Stuffed & Beanbag-Type Toy.....	Pass
7.	Producers Markings	
7.1	Producers Markings.....	Pass
8.	Test Method	
8.5	Normal Use Testing.....	Pass
8.7	Impact Test	Pass
8.8	Torque Test.....	Pass
8.9	Tension Test.....	Pass

Note 1:

Flammability Test (Clause 4.2)

Flammability Test on Solid

<u>Sample</u>	<u>Burning Rate (inch/sec)</u>	<u>Limit (inch/sec)</u>
Patch the Bear	DNI	0.1

-- DNI = Did Not Ignite

Building C, Hongwei Industrial Zone, Baoan 70 District, Shenzhen

Test Report

Report No.: SZT10051208690A

Page 4 of 7

Note 2 :

TOXIC ELEMENTS CONTENT

Heavy Metals Analysis : Total Lead (Clause 4.3.5.1)

Acid Digestion Method was Used and Total Lead Content was Determined by Inductively Coupled Plasma Optical Emission Spectrometer (ICP-OES).

Element	Result(mg/kg)	Limit (mg/kg)
	Brown flocking(nose)	
Total Lead	< 5	90

Heavy Metals Analysis : Soluble Heavy Metal (Clause 4.3.5.2)

Acid Extraction Method was Used in accord with ASTM F963-08 (Clause 8.3) and Toxic Elements Content were Determined by Inductively Coupled Plasma Optical Emission Spectrometer (ICP-OES).

Elements	Result (mg/kg)	Limit (mg/kg)
	Brown flocking(nose) (sample weight:12.9mg)	
Soluble Antimony (Sb)	<5	60
Soluble Arsenic (As)	<2.5	25
Soluble Barium (Ba)	<5	1000
Soluble Cadmium (Cd)	<5	75
Soluble Chromium (Cr)	<2.5	60
Soluble Lead (Pb)	<5	90
Soluble Mercury (Hg)	<2.5	60
Soluble Selenium (Se)	<5	500

Remark:

- < = Less than
- mg/kg = Milligram per kilogram based on dry weight of sample
- Results shown of soluble elements are of adjusted analytical results by subtracting analytical correction factor
- Where the test portion has a mass of between 10mg and 100mg, the quantity of the appropriate elements shall be calculated as if 100mg of the test portion had been used.

Note:

- Only applicable clauses were shown.

Building C, Hongwei Industrial Zone, Baoan 70 District, Shenzhen

Test Report

Report No.: SZT10051208690A

Page 5 of 7

3) US CONSUMER PRODUCTS SAFETY IMPROVEMENT ACT 2008 (CPSIA)

▼ LEAD IN SURFACE-COATING AND SIMILAR MATERIALS OF CHILDREN'S PRODUCT

As Specified in Consumer Products Safety Improvement Act 2008 (CPSIA) and Title 16 Part 1303 Code of Federal Regulations, Chapter II – Consumer Products Safety Commission of U.S.A, Method CPSC-CH-E1003-09 was Used and Total Lead Content was Determined by Inductively Coupled Plasma Optical Emission Spectrometer (ICP-OES).

Element	Result (ppm)	Limit
	Brown flocking(nose)	(ppm)
Total Lead (Pb)	<5	90

Remark:

- <= Less than
- ppm= parts per million based on dry weight of sample

▼ LEAD IN SUBSTRATE MATERIALS OF CHILDREN'S PRODUCT

As Specified in Consumer Products Safety Improvement Act 2008 (CPSIA), Methods CPSC-CH-E1001-08 and CPSC-CH-E1002-08 were Used and Total Lead Content was Determined by Inductively Coupled Plasma Optical Emission Spectrometer (ICP-OES).

Element	Result (ppm)									Limit
	(1)	(2)	(3)	(4)	(5)	(6)	(7)	(8)	(9)	(ppm)
Total Lead (Pb)	<5	43	48	<5	<5	<5	<5	<5	<5	300

Tested Components:

- (1) Transparent plastic(eyes)
- (2) Black soft plastic(eye pad)
- (3) Black hard plastic(inside of eyes)
- (4) Flesh long plush(body)
- (5) Black plastic(nose)
- (6) Brown long plush(eye& ears)
- (7) Dk. Brown short plush(scarf& sole)
- (8) Flesh short plush(face& ears)
- (9) White wadding(inside)

Building C, Hongwei Industrial Zone, Baoan 70 District, Shenzhen

Test Report

Report No.: SZT10051208690A

Page 6 of 7

Remark:

- <= Less than
- ppm= parts per million based on dry weight of sample
- Result(s) shown of tested component(s) (1) is/are quoted from CTI test report SZT10042907767.

▼ PHTHALATES IN CHILDREN'S TOY AND CHILD CARE ARTICLES

As Specified in Consumer Products Safety Improvement Act 2008 (CPSIA), Method CPSC-CH-C1001-09.3 was Used and phthalates were Determined by Gas Chromatograph with Mass Spectrometer (GC-MS).

Material(s) in toys and childcare articles			
Tested Item	Result (%)		Limit# (%)
	(1)	(2)/(3)/(4)	
Di-2-ethylhexyl Phthalate (DEHP)	<0.003	<0.003	0.1
Dibutyl Phthalate (DBP)	<0.003	<0.003	0.1
Benzylbutyl Phthalate (BBP)	<0.003	<0.003	0.1

Material(s) in toys that can be placed in mouth and childcare articles			
Tested Item	Result (%)		Limit# (%)
	(1)	(2)/(3)/(4)	
Diisononyl Phthalate (DINP)	<0.005	<0.005	0.1
Di-n-octyl Phthalate (DNOP)	<0.003	<0.003	0.1
Diisodecyl Phthalate (DIDP)	<0.005	<0.005	0.1

Tested Components:

- (1) Black plastic(nose)
- (2) Transparent plastic(eyes)
- (3) Black plastic(eye pad)
- (4) Black hard plastic(inside of eyes)

Remark:

- <= Less than
- %= Percentage based on dry weight of sample
- # = The limit for the test result is 1/n of the value column (where " n" is the number of mixed samples)

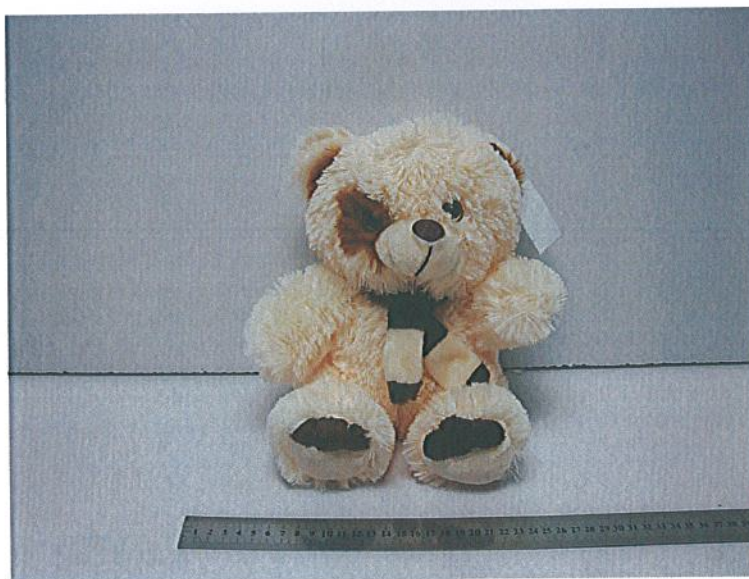
Building C, Hongwei Industrial Zone, Baoan 70 District, Shenzhen

Test Report

Report No.: SZT10051208690A

Page 7 of 7

Photo of the sample



***** End of report ****

This report is considered invalidated without the Special Seal for Inspection of the CTI, This report shall not be altered, increased or deleted. The results shown in this test report refer only to the sample(s) tested. Without written approval of CTI, this test report shall not be copied except in full and published as advertisement.

Building C, Hongwei Industrial Zone, Baoan 70 District, Shenzhen