

Test Report

Report No.: SZT10042307293D

Page 1 of 6

Applicant : CSP INC

Address : 8248 W. ORANGE DR GLENDALE, AZ 85303 USA

Report on the submitted sample said to be:

Sample Name : CROSS NECKLACES
Item/Lot No. : 05-007
Buyer : Kids'Korner
Country of Origin : China
Exported to : U.S.A
Labeled Age Grading : 3+
Sample Received Date : Apr.23, 2010
1st Resubmitted Sample Date : May.19,2010
2nd Resubmitted Sample Date : May.25,2010
3rd Resubmitted Sample Date : May.31,2010
4th Resubmitted Sample Date : Jun.10,2010
5th Resubmitted Sample Date : Jun.18,2010
Sample Tested Date : Apr.23, 2010 to Jun.21, 2010

TEST REQUEST

CONCLUSION

1)US Consumer Products Safety Improvement Act 2008 (CPSIA)

- Lead in surface-coatings and similar materials of children's product
- Lead in substrate materials of children's product

PASS
PASS

2)European Regulation(EC) No. 1907/2006, REACH & amendment No.552/2009 Annex XVII

- (Item 23)Cadmium and its compounds(Formerly Known as 91/338/EEC)

PASS

Test Results: Please refer to next page(s)

Inspected by: Anghu, Approved by: Victor wang Approved date: 2010-06-21
Engineer Victor wang
Lab Manager



Test Report

Report No.: SZT10042307293D

Page 2 of 6

1) US CONSUMER PRODUCTS SAFETY IMPROVEMENT ACT 2008 (CPSIA)

▼ LEAD IN SURFACE-COATING AND SIMILAR MATERIALS OF CHILDREN'S PRODUCT

As Specified in Consumer Products Safety Improvement Act 2008 (CPSIA) and Title 16 Part 1303 Code of Federal Regulations, Chapter II – Consumer Products Safety Commission of U.S.A, Method CPSC-CH-E1003-09 was Used and Total Lead Content was Determined by Inductively Coupled Plasma Optical Emission Spectrometer (ICP-OES).

<u>Element</u>	<u>Result (ppm)</u>		<u>Limit (ppm)</u>
	(1)	(2)	
Total Lead (Pb)	<5	34	90

Tested Components:

- (1) Golden coating(Cross wood pendant)
- (2) Black coating on metal(Cross pendant)

Remark:

- <= Less than
- ppm= parts per million based on dry weight of sample

▼ LEAD IN SUBSTRATE MATERIALS OF CHILDREN'S PRODUCT

As Specified in Consumer Products Safety Improvement Act 2008 (CPSIA), Methods CPSC-CH-E1001-08 and CPSC-CH-E1002-08 were Used and Total Lead Content was Determined by Inductively Coupled Plasma Optical Emission Spectrometer (ICP-OES).

<u>Element</u>	<u>Result (ppm)</u>					<u>Limit (ppm)</u>
	(1)	(2)	(3)	(4)	(5)	
Total Lead (Pb)	63	58	<5	<5	65	300

<u>Element</u>	<u>Result (ppm)</u>					<u>Limit (ppm)</u>
	(6)	(7)	(8)	(9)	(10)	
Total Lead (Pb)	36	33	17	11	273	300

Test Report

Report No.: SZT10042307293D

Page 3 of 6

Element	Result (ppm)					Limit (ppm)
	(11)	(12)	(13)	(14)	(15)	
Total Lead (Pb)	89	20	112	<5	<5	300

Tested Components:

- (1) Silver electro-plated metal (Cross pendant)
- (2) Silver grey electro-plated metal (pendant)
- (3) Transparent plastic with silver inaccessible coating and adhesive(cross wood pendant)
- (4) Beige wood(Cross wood pendant)
- (5) Silver grey electro-plated metal (joint ring of pendant)
- (6) Silver electro-plated metal(joint ring of pendant)
- (7) Black plastic(pendant of chain)
- (8) Silver electro-plated metal(spring)
- (9) Silver electro-plated metal(sliding spool of lobster buckle)
- (10) Silver electro-plated metal(body of lobster buckle)
- (11) Silver electro-plated metal(small ring of lobster buckle)
- (12) Silver electro-plated metal(bead)
- (13) Silver electro-plated metal(chain)
- (14) Black cord(pendant)
- (15) Silver electro-plated metal(bead on silver grey Cross pendant)

Remark:

- <= Less than
- ppm= parts per million based on dry weight of sample
- Result(s) shown of tested component(s) (9) and (15) is/are based on resubmitted part materials.

Test Report

Report No.: SZT10042307293D

Page 4 of 6

2) EUROPEAN REGULATION(EC) NO. 1907/2006, REACH & AMENDMENT NO.552/2009

ANNEX XVII

▼ CADMIUM AND ITS COMPOUNDS

As Specified in European Regulation(EC) No. 1907/2006, REACH & amendment No.552/2009 Annex XVII, with Reference to EN1122:2001 Method B or other Appropriate Methods, and Total Cadmium Content was Performed by Inductively Coupled Plasma Optical Emission Spectrometer (ICP-OES).

Element	Result (%)				Limit (%)
	(1)	(2)	(3)	(4)	
Cadmium (Cd)	<0.0001	<0.0001	<0.0001	<0.0001	N.D(<0.0001)

Element	Result (%)				Limit (%)
	(5)	(6)	(7)	(8)	
Cadmium (Cd)	<0.0001	<0.0001	<0.0001	<0.0001	N.D(<0.0001)

Element	Result (%)				Limit (%)
	(9)	(10)	(11)	(12)	
Cadmium (Cd)	<0.0001	<0.0001	<0.0001	<0.0001	N.D(<0.0001)

Element	Result (%)						Limit (%)
	(13)	(14)	(15)	(16)	(17)	(18)	
Cadmium (Cd)	<0.0005	<0.0005	<0.0005	<0.0005	<0.0005	<0.0005	0.01

Tested Components:

- (1) Silver electro-plated metal (Cross pendant)
- (2) Silver grey electro-plated metal (pendant)
- (3) Silver grey electro-plated metal (joint ring of pendant)
- (4) Silver electro-plated metal(joint ring of pendant)
- (5) Silver electro-plated metal(spring)
- (6) Silver electro-plated metal(sliding spool of lobster buckle)
- (7) Silver electro-plated metal(body of lobster buckle)
- (8) Silver electro-plated metal(small ring of lobster buckle)
- (9) Silver electro-plated metal(bead)
- (10) Silver electro-plated metal(chain)
- (11) Silver electro-plated metal(spring of lobster buckle)

Test Report

Report No.: SZT10042307293D

Page 5 of 6

- (14) Transparent plastic with silver inaccessible coating and adhesive(cross wood pendant)
- (15) Beige wood(Cross wood pendant)
- (16) Black plastic(pendant of chain& bead)
- (17) Black cord(pendant)
- (18) Black coating on metal(Cross pendant)

Remark:

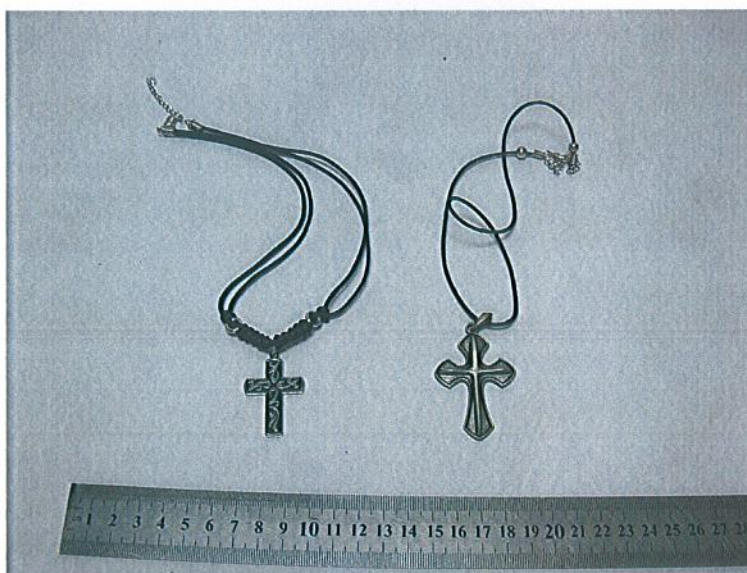
- \leq Less than
- %= Percentage based on dry weight of testing sample
- N.D=Not Detected.
- Result(s) shown of tested component(s) (6) and (12) is/are based on resubmitted part materials.

Test Report

Report No.: SZT10042307293D

Page 6 of 6

Photo of the sample



*** End of report ***

This report is considered invalidated without the Special Seal for Inspection of the CTI, This report shall not be altered, increased or deleted. The results shown in this test report refer only to the sample(s) tested. Without written approval of CTI, this test report shall not be copied except in full and published as advertisement.