

Test Report

Report No.: SZT10042807535A

Page 1 of 8

Applicant : CSP INC
Address : 8248 W. ORANGE DR GLENDALE, AZ 85303 USA

Report on the submitted sample said to be:

Sample Name : SPORTS KICK BALL
Item No. : 03-812
Buyer : Kids'Korner
Country of Origin : China
Exported to : U.S.A
Client Specified Age Grading : 3+
Labelled Age Grading : Not stated
Age Group Applied in Testing : All ages
Sample Received Date : Apr.28,2010, 2010
Resubmitted Sample Date : May.24, 2010
Sample Tested Date : Apr.28,2010, 2010 to May.19, 2010

TEST REQUEST

CONCLUSION

- | | |
|---|------|
| 1)US Consumer Products Safety Improvement Act 2008 (CPSIA) | |
| - Lead in surface-coatings and similar materials of children's product | PASS |
| - Lead in substrate materials of children's product | PASS |
| - Phthalates in children's toys and child care articles | PASS |
| 2)ASTM F963-08 Standard Consumer Safety Specification for Toy Safety | PASS |
| 3)European Regulation(EC) No. 1907/2006, REACH & amendment No.552/2009 Annex XVII | |
| - (Item 23)Cadmium and its compounds(Formerly Known as 91/338/EEC) | PASS |

Test Results: Please refer to next page(s)

Inspected by: Frank Approved by: Victor wang Approved date: 2010-05-26
Engineer Victor wang
Lab Manager



Building C, Hongwei Industrial Zone, Baoan 70 District, Shenzhen

Test Report

Report No.: SZT10042807535A

Page 2 of 8

1) US CONSUMER PRODUCTS SAFETY IMPROVEMENT ACT 2008 (CPSIA)

▼ LEAD IN SURFACE-COATING AND SIMILAR MATERIALS OF CHILDREN'S PRODUCT

As Specified in Consumer Products Safety Improvement Act 2008 (CPSIA) and Title 16 Part 1303 Code of Federal Regulations, Chapter II – Consumer Products Safety Commission of U.S.A, Method CPSC-CH-E1003-09 was Used and Total Lead Content was Determined by Inductively Coupled Plasma Optical Emission Spectrometer (ICP-OES).

| <u>Element</u> | <u>Result (ppm)</u> | | | <u>Limit (ppm)</u> |
|-----------------|---------------------|-----|-----|--------------------|
| | (1) | (2) | (3) | |
| Total Lead (Pb) | <5 | <5 | <5 | 90 |

Tested Components:

- (1) White coating
- (2) Red coating
- (3) Black coating

Remark:

- <= Less than
- ppm= parts per million based on dry weight of sample

Building C, Hongwei Industrial Zone, Baoan 70 District, Shenzhen

Test Report

Report No.: SZT10042807535A

Page 3 of 8

▼ LEAD IN SUBSTRATE MATERIALS OF CHILDREN'S PRODUCT

As Specified in Consumer Products Safety Improvement Act 2008 (CPSIA), Methods CPSC-CH-E1001-08 and CPSC-CH-E1002-08 were Used and Total Lead Content was Determined by Inductively Coupled Plasma Optical Emission Spectrometer (ICP-OES).

| Element | Result (ppm) | | | | Limit (ppm) |
|-----------------|--------------|-----|-----|-----|-------------|
| | (1) | (2) | (3) | (4) | |
| Total Lead (Pb) | 25 | 25 | 10 | <5 | 300 |

Tested Components:

- (1) Brown synthetic leather
- (2) White synthetic leather(baseball)
- (3) Bright white synthetic leather(football)
- (4) Orange synthetic leather

Remark:

- < = Less than
- ppm= parts per million based on dry weight of sample
- Result(s) shown of tested component(s) (4) is/are quoted from CTI test report SZT10040605808

Test Report

Report No.: SZT10042807535A

Page 4 of 8

▼ PHTHALATES IN CHILDREN'S TOY AND CHILD CARE ARTICLES

As Specified in Consumer Products Safety Improvement Act 2008 (CPSIA), Method CPSC-CH-C1001-09.3 was Used and phthalates were Determined by Gas Chromatograph with Mass Spectrometer (GC-MS).

| Material(s) in toys and childcare articles | | | | |
|--|-------------|-------------|--------|------------|
| Tested Item | Result (%) | | | Limit# (%) |
| | (1)/(2)/(3) | (4)/(5)/(6) | (7) | |
| Di-2-ethylhexyl Phthalate (DEHP) | <0.003 | <0.003 | <0.003 | 0.1 |
| Dibutyl Phthalate (DBP) | <0.003 | <0.003 | <0.003 | 0.1 |
| Benzylbutyl Phthalate (BBP) | <0.003 | <0.003 | <0.003 | 0.1 |

| Material(s) in toys that can be placed in mouth and childcare articles | | | | |
|--|-------------|-------------|--------|------------|
| Tested Item | Result (%) | | | Limit# (%) |
| | (1)/(2)/(3) | (4)/(5)/(6) | (7) | |
| Diisononyl Phthalate (DINP) | <0.005 | <0.005 | <0.005 | 0.1 |
| Di-n-octyl Phthalate (DNOP) | <0.003 | <0.003 | <0.003 | 0.1 |
| Diisodecyl Phthalate (DIDP) | <0.005 | <0.005 | <0.005 | 0.1 |

Tested Components:

- (1) White coating
- (2) Red coating
- (3) Black coating
- (4) Brown synthetic leather
- (5) White synthetic leather(baseball)
- (6) Bright white synthetic leather(football)
- (7) Orange synthetic leather

Remark:

- <= Less than
- %= Percentage based on dry weight of sample
- # = The limit for the test result is 1/n of the value column (where "n" is the number of mixed samples)

Building C, Hongwei Industrial Zone, Baoan 70 District, Shenzhen

Test Report

Report No.: SZT10042807535A

Page 5 of 8

2) ASTM F963 –08

As Specified in ASTM F963-08 Standard Consumer Safety Specification for Toy Safety.

| <u>Clause</u> | <u>Description</u> | <u>Assessment</u> |
|---------------|---|----------------------|
| 4. | Safety Requirements | |
| 4.1 | Material Quality (Visual Examination)..... | Pass |
| 4.2 | Flammability Test..... | Pass (See Note 1) |
| 4.3 | Toxicology | |
| 4.3.5 | Paint & Similar Surface-coating Material..... | Pass (See Note 2) |
| 4.6 | Small Objects..... | Pass |
| 4.7 | Accessible Edges..... | Pass |
| 4.9 | Accessible Points..... | Pass |
| 4.27 | Stuffed & Beanbag-Type Toy..... | Pass |
| 7. | Producers Markings | |
| 7.1 | Producers Markings..... | Pass |
| 8. | Test Method | |
| 8.5 | Normal Use Testing..... | Pass |
| 8.7 | Impact Test | Pass |
| 8.8 | Torque Test..... | Pass |
| 8.9 | Tension Test..... | Pass |

Note 1:

Flammability Test (Clause 4.2)

Flammability Test on Solid

| <u>Sample</u> | <u>Burning Rate (inch/sec)</u> | <u>Limit (inch/sec)</u> |
|------------------|--------------------------------|-------------------------|
| SPORTS KICK BALL | DNI | 0.1 |

DNI = Did Not Ignite

Building C, Hongwei Industrial Zone, Baoan 70 District, Shenzhen

Test Report

Report No.: SZT10042807535A

Page 6 of 8

Note 2 :

TOXIC ELEMENTS CONTENT

Heavy Metals Analysis : Total Lead (Clause 4.3.5.1)

Acid Digestion Method was Used and Total Lead Content was Determined by Inductively Coupled Plasma Optical Emission Spectrometer (ICP-OES).

| Element | Result(mg/kg) | | | Limit (mg/kg) |
|------------|---------------|-----|-----|------------------|
| | (1) | (2) | (3) | |
| Total Lead | < 5 | < 5 | < 5 | 90 |

Tested Components:

- (1) White coating
- (2) Red coating
- (3) Black coating

Heavy Metals Analysis : Soluble Heavy Metal (Clause 4.3.5.2)

Acid Extraction Method was Used in accord with ASTM F963-08 (Clause 8.3) and Toxic Elements Content were Determined by Inductively Coupled Plasma Optical Emission Spectrometer (ICP-OES).

Remark:

- < = Less than
- mg/kg = Milligram per kilogram based on dry weight of sample
- As received, the test portion of white coating, red coating and black coating are less than 10mg, therefore such components were not tested for soluble elements, as specified in ASTM F963-08 Clause 8.3.3.1 (2)

Note:

- Only applicable clauses were shown.

Building C, Hongwei Industrial Zone, Baoan 70 District, Shenzhen

Test Report

Report No.: SZT10042807535

Page 7 of 8

3) CADMIUM AND ITS COMPOUNDS

As Specified in European Regulation(EC) No. 1907/2006, REACH & amendment No.552/2009 Annex XVII, with Reference to EN1122:2001 Method B or other Appropriate Methods, and Total Cadmium Content was Performed by Inductively Coupled Plasma Optical Emission Spectrometer (ICP-OES).

| Element | Result (%) | | | | | Limit (%) |
|--------------|------------|---------|---------|---------|---------|-----------|
| | (1) | (2) | (3) | (4) | (5) | |
| Cadmium (Cd) | <0.0005 | <0.0005 | <0.0005 | <0.0005 | <0.0005 | 0.01 |

| Element | Result (%) | | | | | Limit (%) |
|--------------|------------|---------|---------|---------|---------|-----------|
| | (6) | (7) | (8) | (9) | (10) | |
| Cadmium (Cd) | <0.0005 | <0.0005 | <0.0005 | <0.0005 | <0.0005 | 0.01 |

Tested Components:

- (1) White coating
- (2) Red coating
- (3) Black coating
- (4) Brown synthetic leather
- (5) White synthetic leather(baseball)
- (6) Bright white synthetic leather(football)
- (7) Orange synthetic leather
- (8) Transparent plastic film(inside)
- (9) White foam(inside)
- (10) White plastic grain(inside)

Remark:

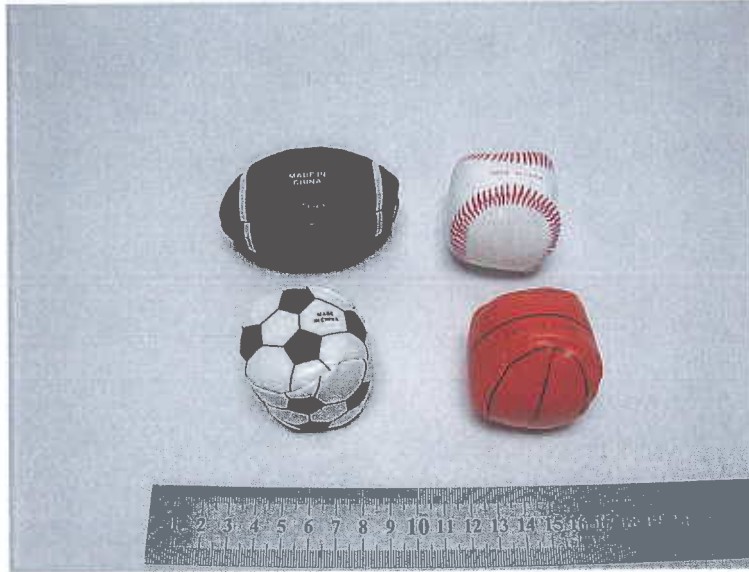
- <= Less than
- %= Percentage based on dry weight of testing sample

Test Report

Report No.: SZT10042807535

Page 8 of 8

Photo of the sample



*** End of report ***

This report is considered invalidated without the Special Seal for Inspection of the CTI, This report shall not be altered, increased or deleted. The results shown in this test report refer only to the sample(s) tested. Without written approval of CTI, this test report shall not be copied except in full and published as advertisement.